

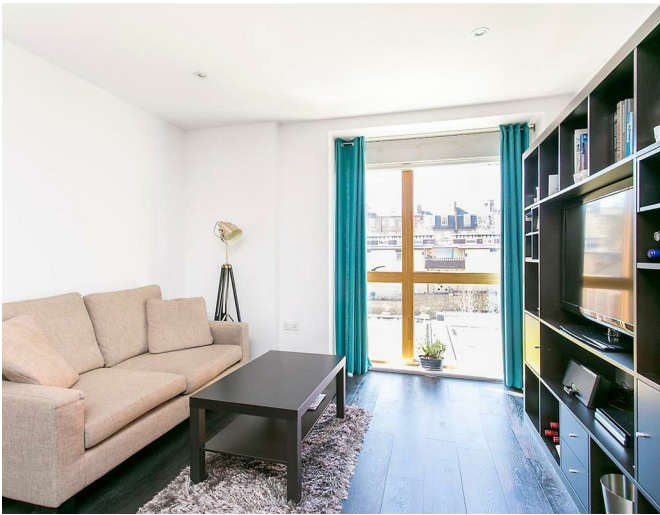


GUIDE PRICE £525,000

A one-bedroom apartment superbly located in an award-winning development. Having undergone a complete refurbishment, the apartment comprises of an open plan lounge, double bedroom with built-in wardrobes, spacious bathroom with shower over bath and excellent storage.

Located in Barnsbury Place, N1, this award-winning Edwardian School conversion benefits from a 24-hour concierge, secure bike storage, video entryphone system and well maintained communal gardens.

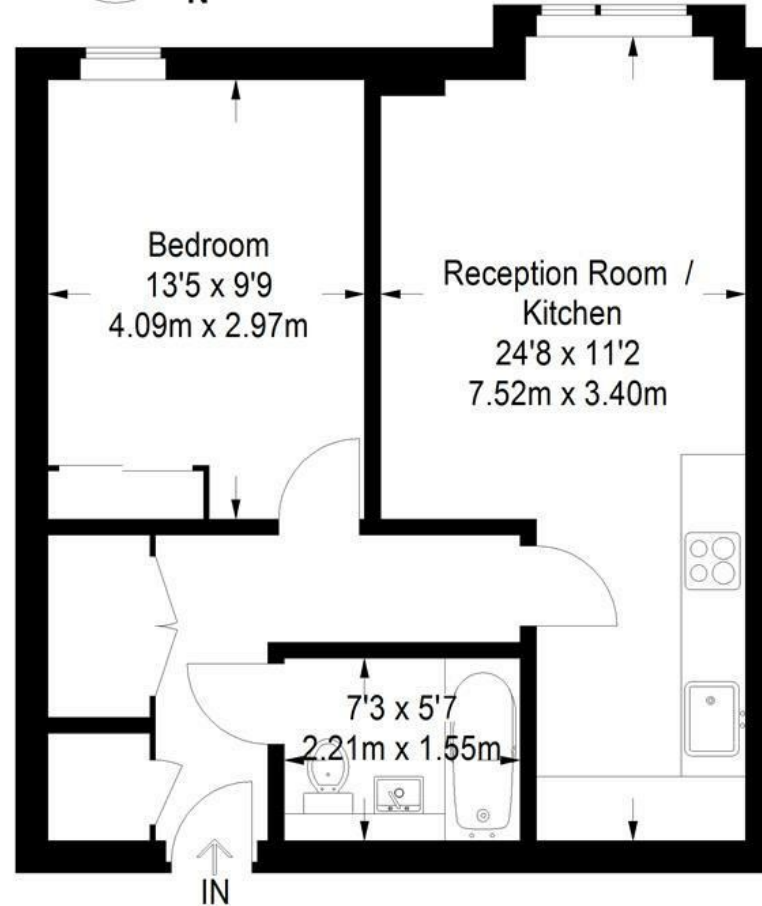
There are excellent transport links, with Highbury and Islington station a short walk away (Victoria line and London Overground), Angel (Northern Line) and many 24-hour buses.



Manson House

Red.

Approximate Gross Internal Area
506 sq ft / 47 sq m



Second Floor

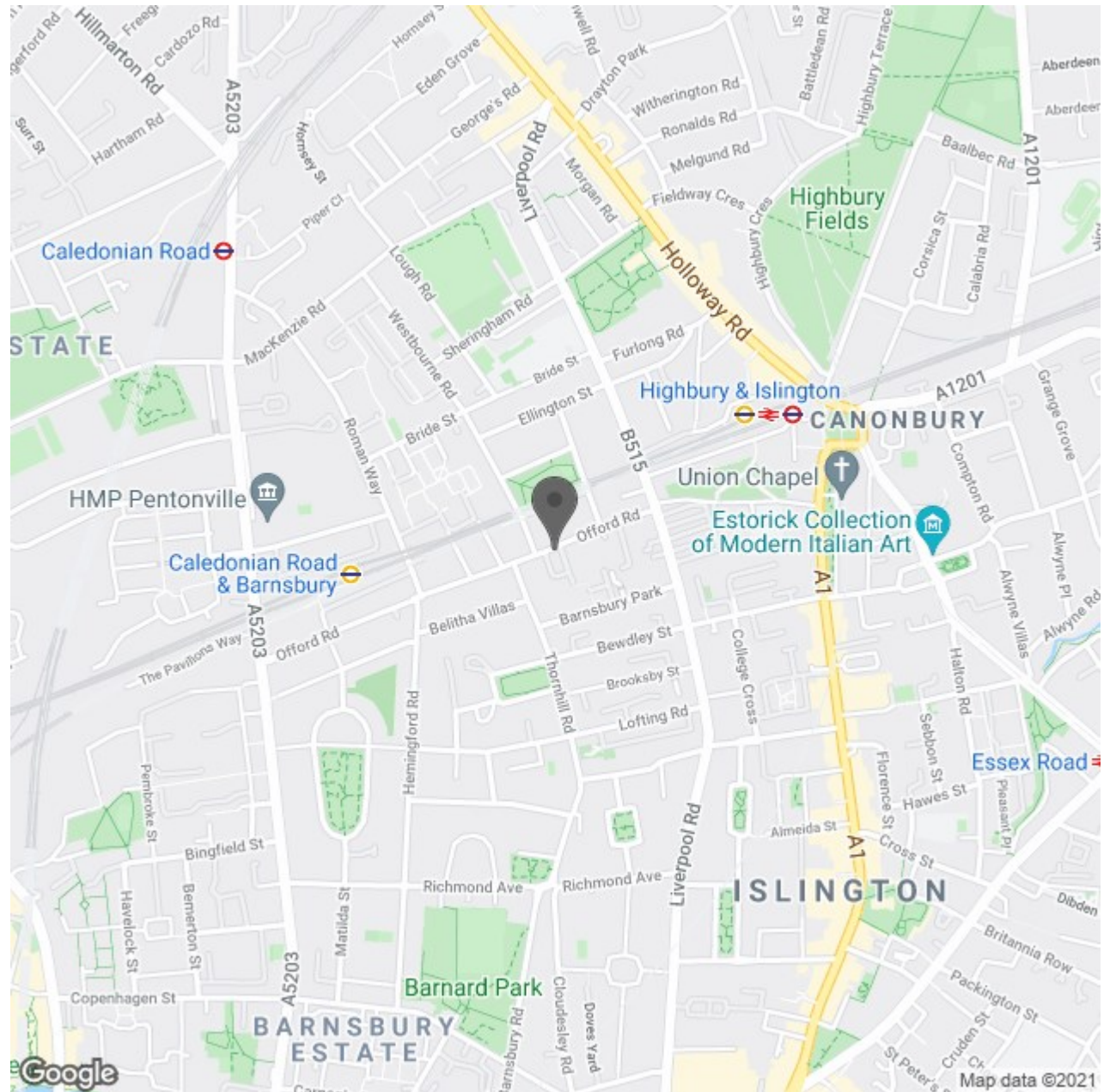
Illustration for identification purposes only,
measurements are approximate, not to scale.

- One Bed Apartment
- Modern Interior
- Secure Entry-Phone
- Communal Gardens
- 24-Hour Porter
- Secure Gated Development
- Under-Floor Heating
- Excellent Storage
- Secure Cycle Store



Energy Efficiency Rating		Current	Potential
Very energy efficient - lower running costs			
(92 plus) A			
(81-91) B			
(69-80) C			
(55-68) D			
(39-54) E			
(21-38) F			
(1-20) G			
Not energy efficient - higher running costs			
England & Wales		72	73
EU Directive 2002/91/EC			

Environmental Impact (CO ₂) Rating		Current	Potential
Very environmentally friendly - lower CO ₂ emissions			
(92 plus) A			
(81-91) B			
(69-80) C			
(55-68) D			
(39-54) E			
(21-38) F			
(1-20) G			
Not environmentally friendly - higher CO ₂ emissions			
England & Wales		80	81
EU Directive 2002/91/EC			



Red Property Partnership Ltd
 Company Registered in England & Wales No. 06946290
 Registered Office: 501 Kingsland Road, London, E8 4AU
 VAT Registration Number: 112288536